



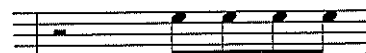
Instrument: Viola

Group: String Orchestra

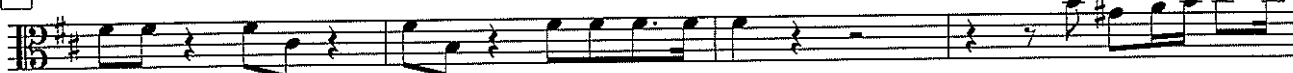
Excerpt: Concerto Grosso 1, A. Corelli op6

Tempo: Largo (Quaver = 80-90bpm) Allegro (Crotchet = 120-140bpm)

LARGO



5



9



12



ALLEGRO

40



46



54





Instrument: Viola

Group: String Orchestra

Name of piece: Londonderry Air
Tempo: 70bpm

17 *expressively*

f *decresc.*

mf *f* *decresc.*

26 *molto espr.*

mf *f*

mf *decresc.* *mp*

Detailed description: This block contains four staves of musical notation for the Viola part of the Londonderry Air. The first staff (measures 17-25) begins with a box containing the number 17 and the instruction "expressively". The music starts with a forte (*f*) dynamic and includes a decrescendo (*decresc.*) marking. The second staff (measures 26-34) starts with a mezzo-forte (*mf*) dynamic, followed by a forte (*f*) dynamic and another decrescendo (*decresc.*) marking. The third staff (measures 35-43) begins with a box containing the number 26 and the instruction "molto espr.". It starts with a mezzo-forte (*mf*) dynamic, followed by a forte (*f*) dynamic. The fourth staff (measures 44-52) starts with a mezzo-forte (*mf*) dynamic, includes a decrescendo (*decresc.*) marking, and ends with a mezzo-piano (*mp*) dynamic.